

AIMS

SQL Server 2000 Database Import & Client Software Installation Procedures

These are the system specific instructions for installing the AIMS SQL Server Database and Client Software. Your responses are in **bold face**. The words in brackets, [], indicate the actual keys on the keyboard to be used. If you have any questions regarding the installation procedure, please contact technical support at (800) 541-2467.

Instruction Contents

- Before the Installation
- SQL Server Database Setup Procedure
- ODBC for SQL Server Configuration
- AIMS Server Software Installation Procedure
- AIMS Client Software Installation Procedure
- AIMS/Palm Software Installation Procedure (if applicable)
- Common Controls DLL Update Procedure (if applicable)

Before the Installation

- ◆ Client Computer.
 - Microsoft Windows 95, 98, ME, Windows NT 4.0 WS, or Windows 2000 Professional must be installed and running on your client computer *before* you can install AIMS.
 - The SQL Server ODBC Driver will be installed during the AIMS Client Installation.
 - For best performance, it is recommended that AIMS be installed on computers with a minimum of a Pentium II 300 and 128 MB RAM.
- ◆ File Verification.
 - Verify that the following files are in each of the client's Windows NT 4.0, Windows 2000 System32 or Windows 95, 98, ME System directory.
 - DBNMPNTW.DLL
 - SQLSRV32.DLL
 - NTWDBLIB.DLL (*Required for Windows NT only*)
 - If any of these files are not present they can be found in the AIMS Utility Files directory that will be setup during installation.

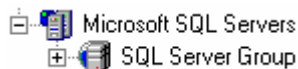
Before the Installation Continued...

- ◆ Server Computer.
 - Windows NT Server 4 with a minimum of NT Service Pack 4 or Windows 2000 Server must be installed.
 - SQL Server Version 2000 must be installed.
 - Selecting TCP/IP as your network protocol will increase the performance of your System.

- ◆ MDBS Database Server.
 - Make sure everyone is out of your AIMS DOS System and your Database Server is down.

SQL Server Database Setup Procedure

- ◆ **This procedure should be performed on the Server.**
- ◆ **Create an AIMS database.**
 - Run the **SQL Enterprise Manager**.
 - Under Microsoft SQL Servers click the [+] sign next to SQL Server Group.



- Click the [+] sign next to the Server Name.

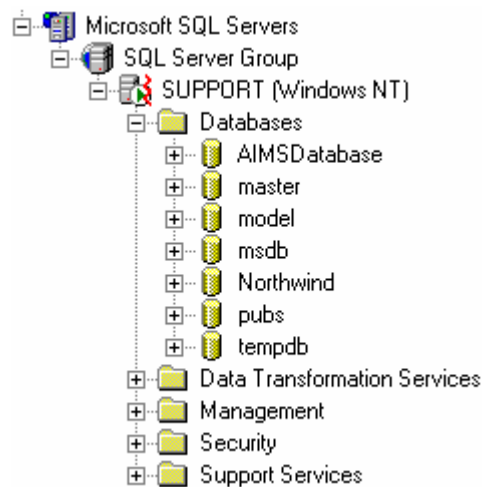


- Right click on **Databases** and select **New Database**.
- In the name box type: **AIMSDatabase**.
- Click **OK**.
- Click the [+] sign next to **Security**.



SQL Server Database Setup Procedure Continued...

- Right click on **Logins** and select **New Login**.
- In the name box type: **Aims**.
- Click on **SQL Server authentication**, leave password blank.
- Under Defaults change the Database to **AIMSDatabase**.
- Click on the **Database Access** tab.
- Under 'Specify which databases can be accessed by this login', click on Permit in the **AIMSDatabase, master, and tempdb** rows.
- Click **OK**.
- Click on the [+] sign next to **Databases**.



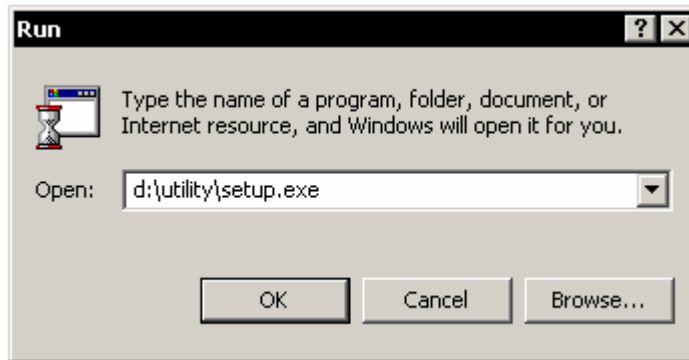
- Right click on **AIMSDatabase** and select **Properties**.
- Click on the **Permissions** tab.
- Click on each of the boxes in the **Aims** row.
- Click **OK**.

ODBC for SQL Server Configuration

- ◆ **This procedure should be performed on the Server as well as on each of the AIMS client computers (before installing the AIMS Client Software).**
- ◆ **Create an ODBC Data Source for SQL Server named ‘AIMS DATABASE’**
- ◆ **Open the Control Panel.**
 - Double click on **ODBC Data Sources**.
Note: Users with Windows 2000 will find the ODBC under Control Panel, Administrative Tools.
 - Click on the **System DSN** tab.
 - Click on **Add**.
 - From the list box select either **Microsoft SQL Server** or **SQL Server**. The version number must be 3.70.06.23 or higher. Once the driver is selected, click on **Finish**.
*Note: If the driver is not present or is not the correct version, a Microsoft Data Access Pack can be found in the Utility directory on the AIMS CD. The file name that will guide you through the installation is: **mdac_typ.exe**.*
 - In the Name box, type: **AIMS DATABASE**. The Description box can be left blank.
 - In the Server box, type the **Name of the Server** (as it is known by the network), or the **IP** address (if you are using TCP/IP).
 - Click on **Next**.
 - Click on the option **With SQL Server authentication using a login ID and password entered by the user**.
 - Make sure that the box for **Connect to SQL Server to obtain default settings for the additional configuration options** is checked.
 - In the Login ID box, type: **aims**.
 - The Password box should be left blank.
 - Click on **Next**.
 - Click on **Change the default database to** and select **AIMSDatabase** from the drop down list.
 - All other check boxes can be left with the default settings.
 - Click on **Next**.
 - Leave all defaults alone on this page.
 - Click on **Finish**.
 - Click on **Test Data Source** and verify that the Tests Completed Successfully, then click **OK**.
 - Click **OK** on the next two screens to complete the ODBC setup.

AIMS Server Software Installation Procedure

- ◆ **This procedure should be performed on the Server.**
- ◆ **Initialize the AIMS database.**
 - Insert the AIMS CD into the CD-ROM drive. The AIMS installation screen will appear.
 - Click on **Exit**.
 - Click on **Start**, and then click on **Run**.
 - In the Open box, type:
d:\utility\setup.exe (where d:\ is your CD-ROM drive)



- Click **OK** to continue. Follow the onscreen instructions (**Select SQL Server during installation**).

*Note: The AIMS Database Upgrade and Utility Files will be installed to the c:\Program Files\AIMS Utility Files directory on the local hard drive. A shortcut to this folder will be placed on the desktop. Please be sure that **only** system administrators access these files and that the directory is deleted after the entire upgrade procedure has been performed. Any previous utilities in this directory will be automatically overwritten.*

- From the Desktop, double click on the folder **AIMS Utility Files**.
- In the AIMS Utility Files folder, double click on **aimsddl.exe**.
Warning: This Utility erases the contents of the AIMS Database. This process should only be performed **once**.
- Select SQL Server as the database engine (if other than the default), and click **OK**.
- Enter the appropriate ODBC Data Source Name (if other than the default) and then click **OK**.
 - The default database name is:
SQL Server: **AIMS DATABASE**
- Click **OK** when finished.

AIMS Server Software Installation Procedure Continued...

◆ Export the AIMS DOS database information.

- Copy the AIMS DOS database files into the AIMS Utility Files folder.
*Note: The only files necessary are the *.db* files and the ai.exe file.*
- In the AIMS Utility Files folder, double click on **awexport.exe**. The program will start to run automatically and it will be complete when the Export screen disappears.
Note: This utility will create several .asc files in the current directory.

◆ Import the AIMS DOS database (Individually for each Facility).

- In the AIMS Utility Files folder, double click on **awimport.exe**.
- Select SQL Server as the database engine (if other than the default), and click **OK**.
- Enter the appropriate ODBC Data Source Name (if other than the default) and then click **OK**.
 - The default database name is:
SQL Server: **AIMS DATABASE**
- The import process prompts for Case Conversion and for a Facility Code that identifies the database being imported. The Facility Code can be up to six alphanumeric characters in length.
Note: If only one facility is being imported, leave the default entry as MAIN.
- When the import is finished, you may want to delete the *.ASC files.
- If applicable, repeat the Import Process for each facility that has an existing AIMS DOS Database (be sure to backup the SQL Server database before importing additional facilities).

AIMS Client Software Installation Procedure

- ◆ **This procedure should be performed on each of the AIMS Clients.**
- ◆ **Be sure the ODBC for SQL Server Configuration Procedure has been completed on the client computer before proceeding (see page 4).**
 - Insert the CD into your CD-ROM drive.

The install program should start automatically. If it does not, follow the instructions below.

- From the Start Menu, click on **Start, Settings** and then **Control Panel**.
- Click on **Add/Remove Programs**.



Add/Remove
Programs

- Click on the **Install** button.
- Select the option to install AIMS, and then click **Install**.
- Follow the onscreen instructions.

AIMS.PDA Software Installation Procedure

If you have purchased Field Link for AIMS.PDA, you will need to install the AIMS.PDA application on each handheld you wish to use. If you have not purchased AIMS.PDA, please proceed to the next section (Common Controls DLL Update Procedure).

- ◆ **WARNING:** Subsequent installations require the previously installed executable to be deleted from the handheld and the new version installed. The executable cannot be overwritten. Please see *Removing the AIMS.PDA executable* instructions below.
- ◆ To install software on your handheld:
 - Double-click the **Palm Desktop icon** on your Windows desktop (or select Palm Desktop from the start menu) to open the Palm Desktop software.
 - Click the **Install** button to open the Palm Install Tool dialog. (You can also access the Install Tool dialog by selecting Install Tool from the Palm Desktop program group or by double-clicking any file with a PRC file extension.)
 - **Select** the name that corresponds to your Palm organizer in the User drop-down list.
 - Click the **Add** button to open the Open dialog.
 - Click on **aims.prc** to install the AIMS.PDA component into your handheld. (The AIMS/Palm application is located in a directory called “Palm Pilot Executable” that has been installed with the AIMS software. The default location is: C:\Program Files\AIMS\Palm Pilot Executable.)
 - Click the **Open** button to return to the Install Tool dialog.
 - Perform a local HotSync® operation to install the application. (See *Applications Handbook for the Palm Organizer* for details.)
- ◆ Removing the AIMS.PDA executable.
 - First, clear all AIMS data that has been dispatched to each handheld.
 - From the PDA Work Load Distribution Settings in AIMS, check the option "On the next hotsync: download all work orders from the handheld and remove Field Access rights" for each user.
 - Perform a local HotSync® for each handheld.
 - Remove the AIMS.PDA application from the handheld.
 - To remove an application from the handheld, select “delete” from the menu options and follow the onscreen process. (See *Applications Handbook for the Palm Organizer* for details.)
 - Reload new AIMS.PDA executable. Follow *To install software on your handheld* instructions above.

Common Controls DLL Update Procedure

- ◆ This version of AIMS requires an updated version of the common controls DLL.
- ◆ This DLL set is preinstalled on Windows 98, ME and Windows 2000 machines, and is also installed on machines that have Microsoft Internet Explorer 4.01 or higher.
- ◆ Windows 95 and Windows NT 4.0 machines that do not have this newer version of Microsoft Internet Explorer require the user to run this update.
- ◆ Windows NT users *must* have Service Pack 3 or higher installed on their machine before performing this update.
- ◆ **DO NOT** run this update on Windows 98, ME, Windows NT 3.x or Windows 2000.
- ◆ From a client that requires this update:
 - Using the Start Menu, click on **Start**, and then **Run**.
 - In the Open box, type: **d:\utility\401comupd.exe** (where d:\ is your CD-ROM drive).
 - Click on **OK** or press [Enter]. Follow the onscreen instructions.