

AIMS

Remote Requester Installation Procedure

These are the system specific instructions for installing AIMS Remote Requester. Your responses are in **bold face**. Words in brackets, [], indicate the actual keys on the keyboard to be used. If you have any questions regarding the installation procedure, or require the software on 3.5" disks, please contact technical support at (800) 541-2467.

Remote Requester Software Installation Procedure

- ◆ Under Windows 95, 98 or Windows NT 4.0, 2000 Operating System.
 - Insert the CD into your CD-ROM drive.

The install program should start automatically. If it does not, follow the instructions below.

 - From the Start Menu, click on **Start, Settings** and then **Control Panel**.
 - Click on **Add/Remove Programs**.



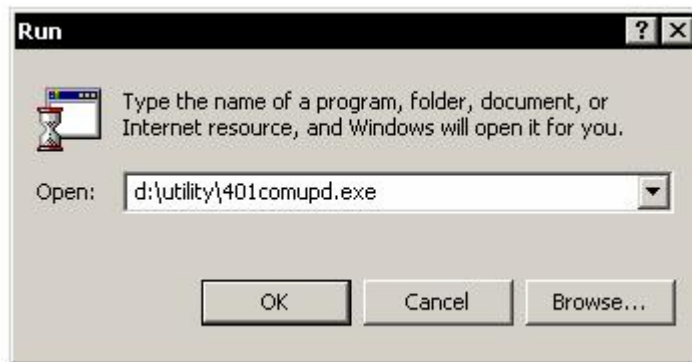
Add/Remove
Programs

- Click on the **Install** button.
 - Follow the onscreen instructions.
- ◆ During installation, you will be prompted for the Program Selection.
- ◆ Two installation types will be needed for the Requester program to work.
- ◆ The first installation type is the **AIMS Remote Requester Client**.
 - Install this software to all of the computers that will use the client portion of the software.
- ◆ The second installation type is the **Requester Interface Program**.
 - Select the Interface program that matches your database type:
(Oracle or SQL Server)
 - This software should be installed to a single computer (one other than the Requester Client computers).
 - This computer will be the designated as the Requester Server and must be configured to connect to the AIMS Database.

*Note: Be sure to have SQL *NET Easy (for Oracle databases) or ODBC (for SQL Server databases) configured before running the Requester software.*

Common Controls DLL Update Procedure

- ◆ This version of AIMS requires an updated version of the common controls DLL.
- ◆ This DLL set is preinstalled on Windows 98, ME and Windows 2000 machines, and is also installed on machines that have Microsoft Internet Explorer 4.01 or higher.
- ◆ Windows 95 and Windows NT 4.0 machines that do not have this newer version of Microsoft Internet Explorer require the user to run this update.
- ◆ Windows NT users *must* have Service Pack 3 or higher installed on their machine before performing this update.
- ◆ **DO NOT** run this update on Windows 98, ME Windows NT 3.x or Windows 2000.
- ◆ From a client that requires this update:
 - Click on **Start**, and then click on **Run**.
 - In the Open box, type:
d:\utility\401comupd.exe (where d:\ is your CD-ROM drive)



- Click on **OK** or press [Enter]. Follow the onscreen instructions.

Instructions of using Remote Requester Programs

- ◆ Print out the file named **instruction.doc** from the CD, this file will show you how to use the Remote Requester Programs.