

AIMS Field Access Installation Procedure

These are the system specific instructions for installing AIMS Field Access. Your responses are in **bold face**. Words in brackets, [], indicate the actual keys on the keyboard to be used. If you have any questions regarding the installation procedure, or require the software on 3.5" disks, please contact technical support at (800) 541-2467.

AIMS Field Access Software Installation Procedure

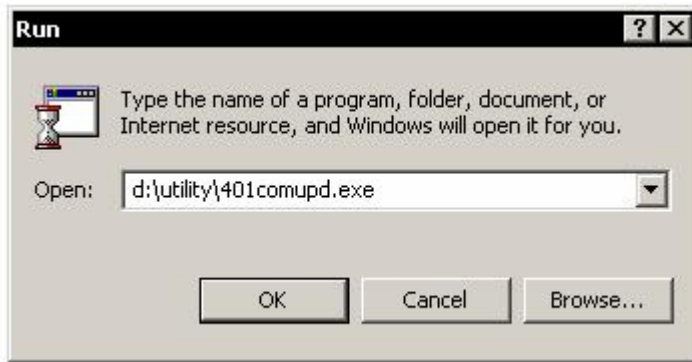
- ◆ **For users upgrading their Field Access, please read the next two lines very carefully. New installations can ignore these two lines.**
- ◆ **Be sure that all work has been merged back in to the main AIMS Database.**
- ◆ **This procedure will erase and replace the Field Access Database.**
- ◆ This installation procedure should be performed on each of the AIMS Field Access Clients.
 - Insert the CD into your CD-ROM drive.

The install program should start automatically. If it does not, follow the instructions below.

- Click on **Start**, and then click on **Run**.
- In the Open box, type:
d:\setup.exe (where d:\ is your CD-ROM drive)
- Select the option to install **Field Access**, and then click **Install**.
- Follow the onscreen instructions.

Common Controls DLL Update Procedure

- ◆ This version of AIMS requires an updated version of the common controls DLL.
- ◆ This DLL set is preinstalled on Windows 98, ME and Windows 2000 machines, and is also installed on machines that have Microsoft Internet Explorer 4.01 or higher.
- ◆ Windows 95 and Windows NT 4.0 machines that do not have this newer version of Microsoft Internet Explorer require the user to run this update.
- ◆ Windows NT users *must* have Service Pack 3 or higher installed on their machine before performing this update.
- ◆ **DO NOT** run this update on Windows 98, ME Windows NT 3.x or Windows 2000.
- ◆ From a client that requires this update:
 - Click on **Start**, and then click on **Run**.
 - In the Open box, type:
d:\utility\401comupd.exe (where d:\ is your CD-ROM drive)



- Click on **OK** or press [Enter]. Follow the onscreen instructions.