

AIMS

Upgrade Installation Procedure

These are the system specific instructions for installing the AIMS upgrade. Your responses are in **bold face**. Words in brackets, [], indicate the actual keys on the keyboard to be used. If you have any questions regarding the installation procedure, or require the software on 3.5" disks, please contact technical support at (800) 541-2467. Please be sure to read the instructions in their entirety.

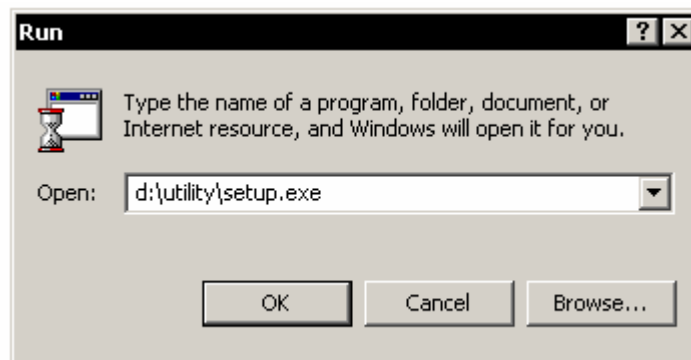
Instruction Contents

- Database Upgrade Procedure
- Optional Update(s)
- AIMS Client Software Installation Procedure
- AIMS/Palm Software Installation Procedure (if applicable)
- Common Controls DLL Update Procedure (if applicable)

Database Upgrade Procedure

- ◆ **Create a backup copy of the database before proceeding.**
- ◆ **Please note: DO NOT run a previous version of AIMS after upgrading the database. ONLY version 8.x will function properly once the database has been upgraded.**
- ◆ The database upgrade procedure should be run *only once* for each database.
- ◆ From an AIMS client running Windows 95, 98, ME, Windows NT 4.0 WS, or Windows 2000 Professional.
 - Insert the CD into your CD-ROM drive, the AIMS installation screen will appear.
 - Click on **Exit**.
 - Click on **Start**, and then click on **Run**.
 - In the Open box, type:

d:\utility\setup.exe (where d:\ is your CD-ROM drive)



- Click **OK** to continue. Follow the onscreen instructions.

Database Upgrade Procedure Continued...

*Note: The AIMS Database Upgrade and Utility Files will be installed to the c:\Program Files\AIMS Utility Files directory on the local hard drive. A shortcut to this folder will be placed on the desktop. Please be sure that **only** system administrators access these files and that the directory is deleted after the entire upgrade procedure has been performed. Any previous utilities in this directory will be automatically overwritten.*

◆ **For users at a version previous to 7.1x, please contact Phoenix Data Technical Support at (800) 541.2467. All other users, Start Here.**

- From the Desktop, double click on the folder **AIMS Utility Files**.
- In the AIMS Utility Files folder, double click on **udb80.exe**.
- Select the appropriate database engine (if other than the default), and click **OK**.
- Enter the appropriate ODBC Data Source Name (Access & SQL Server customers) or Net Service Name (Oracle customers), if other than the default, and then click **OK**.
 - The default database names are:
Access: **AIMS Access**
Oracle: **AIMSDB**
SQL Server: **AIMS DATABASE**
- Click **Process** to begin.
- Click **OK** when finished.
- In the AIMS Utility Files folder, double click on **updsec.exe**.
- Select the appropriate database engine (if other than the default), and click **OK**.
- Enter the appropriate ODBC Data Source Name (Access & SQL Server customers) or Net Service Name (Oracle customers), if other than the default, and then click **OK**.
 - The default database names are:
Access: **AIMS Access**
Oracle: **AIMSDB**
SQL Server: **AIMS DATABASE**
- Click **Process** to begin.
- Click **OK** when finished.

Optional Update

- ◆ This update is optional and is not required to run AIMS 8.0.0.0.
- ◆ The following program will add the Models, along with their respective Equipment Type, to the Vendor information page. This information is based off of models that have been used on existing equipment records.
 - From the Desktop, double click on the folder **AIMS Utility Files**.
 - In the AIMS Utility Files folder, double click on **addmodels.exe**.
 - Select the appropriate database engine (if other than the default), and click **OK**.
 - Enter the appropriate ODBC Data Source Name (Access & SQL Server customers) or Net Service Name (Oracle customers), if other than the default, and then click **OK**.
 - The default database names are:
 - Access: **AIMS Access**
 - Oracle: **AIMSDB**
 - SQL Server: **AIMS DATABASE**
 - Click **Process** to begin.
 - Click **OK** when finished.
- ◆ Once completed, the program will create a file named **models.txt**. This file contains information on Models that could not be assigned because they were previously assigned.

AIMS Client Software Installation Procedure

- ◆ This installation procedure should be performed on each of the AIMS Clients.
 - Insert the CD into your CD-ROM drive.

The install program should start automatically. If it does not, follow the instructions below.

 - Click on **Start**, and then click on **Run**.
 - In the Open box, type:
d:\setup.exe (where d:\ is your CD-ROM drive)
 - Select the option to install **AIMS**, and then click **Install**.
 - Follow the onscreen instructions.

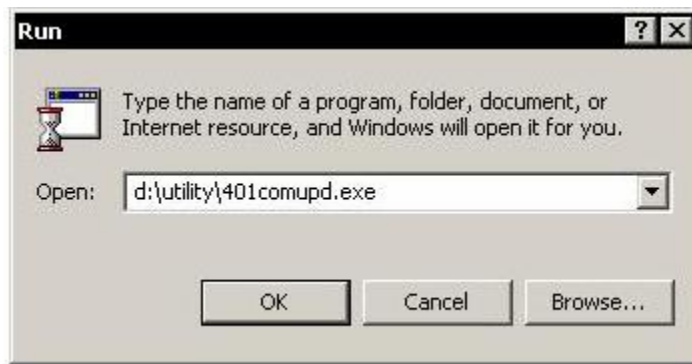
AIMS.PDA Software Installation Procedure

If you have purchased Field Link for AIMS.PDA, you will need to install the AIMS.PDA application on each handheld you wish to use. If you have not purchased AIMS.PDA, please proceed to the next section (Common Controls DLL Update Procedure).

- ◆ **WARNING:** Subsequent installations require the previously installed executable to be deleted from the handheld and the new version installed. The executable cannot be overwritten. Please see *Removing the AIMS.PDA executable* instructions below.
- ◆ To install software on your handheld:
 - Double-click the **Palm Desktop icon** on your Windows desktop (or select Palm Desktop from the start menu) to open the Palm Desktop software.
 - Click the **Install** button to open the Palm Install Tool dialog. (You can also access the Install Tool dialog by selecting Install Tool from the Palm Desktop program group or by double-clicking any file with a PRC file extension.)
 - **Select** the name that corresponds to your Palm organizer in the User drop-down list.
 - Click the **Add** button to open the Open dialog.
 - Click on **aims.prc** to install the AIMS.PDA component into your handheld. (The AIMS/Palm application is located in a directory called “Palm Pilot Executable” that has been installed with the AIMS software. The default location is: C:\Program Files\AIMS\Palm Pilot Executable.)
 - Click the **Open** button to return to the Install Tool dialog.
 - Perform a local HotSync® operation to install the application. (See *Applications Handbook for the Palm Organizer* for details.)
- ◆ Removing the AIMS.PDA executable.
 - First, clear all AIMS data that has been dispatched to each handheld.
 - From the PDA Work Load Distribution Settings in AIMS, check the option "On the next hotsync: download all work orders from the handheld and remove Field Access rights" for each user.
 - Perform a local HotSync® for each handheld.
 - Remove the AIMS.PDA application from the handheld.
 - To remove an application from the handheld, select “delete” from the menu options and follow the onscreen process. (See *Applications Handbook for the Palm Organizer* for details.)
 - Reload new AIMS.PDA executable. Follow *To install software on your handheld* instructions above.

Common Controls DLL Update Procedure

- ◆ This version of AIMS requires an updated version of the common controls DLL.
- ◆ This DLL set is preinstalled on Windows 98, ME and Windows 2000 machines, and is also installed on machines that have Microsoft Internet Explorer 4.01 or higher.
- ◆ Windows 95 and Windows NT 4.0 machines that do not have this newer version of Microsoft Internet Explorer require the user to run this update.
- ◆ Windows NT users *must* have Service Pack 3 or higher installed on their machine before performing this update.
- ◆ **DO NOT** run this update on Windows 98, ME Windows NT 3.x or Windows 2000.
- ◆ From a client that requires this update:
 - Click on **Start**, and then click on **Run**.
 - In the Open box, type:
d:\utility\401comupd.exe (where d:\ is your CD-ROM drive)



- Click on **OK** or press [Enter]. Follow the onscreen instructions.

The AIMS Upgrade Procedure is complete.

Please be sure to remove the AIMS Utility Files

Located in: c:\Program Files\AIMS Utility Files

Note: You may uninstall the AIMS Utility Files from the Control Panel, Add/Remove Programs