

# AIMS

## Upgrade Installation Procedure (Client Only)

These are the system specific instructions for installing the AIMS Client Software. Your responses are in **bold face**. Words in brackets, [ ], indicate the actual keys on the keyboard to be used. If you have any questions regarding the installation procedure, or require the software on 3.5" disks, please contact technical support at (800) 541-2467. Please be sure to read the instructions in their entirety.

### Instruction Contents

- AIMS Client Software Installation Procedure
- AIMS/Palm Software Installation Procedure (if applicable)
- Common Controls DLL Update Procedure (if applicable)

### AIMS Client Software Installation Procedure

- ◆ **This upgrade can only be performed if you are running AIMS version 8.0.0.0 or higher.**
- ◆ This installation procedure should be performed on each of the AIMS Clients.
  - Insert the CD into your CD-ROM drive.

The install program should start automatically. If it does not, follow the instructions below.

    - Click on **Start**, and then click on **Run**.
    - In the Open box, type:  
**d:\setup.exe** (where d:\ is your CD-ROM drive)
    - Select the option to install **AIMS**, and then click **Install**.
    - Follow the onscreen instructions.

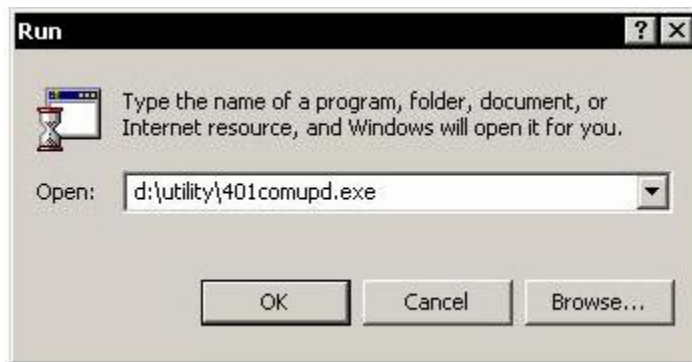
## AIMS.PDA Software Installation Procedure

If you have purchased Field Link for AIMS.PDA, you will need to install the AIMS.PDA application on each handheld you wish to use. If you have not purchased AIMS.PDA, please proceed to the next section (Common Controls DLL Update Procedure).

- ◆ **WARNING:** Subsequent installations require the previously installed executable to be deleted from the handheld and the new version installed. The executable cannot be overwritten. Please see *Removing the AIMS.PDA executable* instructions below.
- ◆ To install software on your handheld:
  - Double-click the **Palm Desktop icon** on your Windows desktop (or select Palm Desktop from the start menu) to open the Palm Desktop software.
  - Click the **Install** button to open the Palm Install Tool dialog. (You can also access the Install Tool dialog by selecting Install Tool from the Palm Desktop program group or by double-clicking any file with a PRC file extension.)
  - **Select** the name that corresponds to your Palm organizer in the User drop-down list.
  - Click the **Add** button to open the Open dialog.
  - Click on **aims.prc** to install the AIMS.PDA component into your handheld. (The AIMS/Palm application is located in a directory called “Palm Pilot Executable” that has been installed with the AIMS software. The default location is: C:\Program Files\AIMS\Palm Pilot Executable.)
  - Click the **Open** button to return to the Install Tool dialog.
  - Perform a local HotSync® operation to install the application. (See *Applications Handbook for the Palm Organizer* for details.)
- ◆ Removing the AIMS.PDA executable.
  - First, clear all AIMS data that has been dispatched to each handheld.
    - From the PDA Work Load Distribution Settings in AIMS, check the option "On the next hotsync: download all work orders from the handheld and remove Field Access rights" for each user.
  - Perform a local HotSync® for each handheld.
  - Remove the AIMS.PDA application from the handheld.
    - To remove an application from the handheld, select “delete” from the menu options and follow the onscreen process. (See *Applications Handbook for the Palm Organizer* for details.)
  - Reload new AIMS.PDA executable. Follow *To install software on your handheld* instructions above.

## Common Controls DLL Update Procedure

- ◆ This version of AIMS requires an updated version of the common controls DLL.
- ◆ This DLL set is preinstalled on Windows 98, ME and Windows 2000 machines, and is also installed on machines that have Microsoft Internet Explorer 4.01 or higher.
- ◆ Windows 95 and Windows NT 4.0 machines that do not have this newer version of Microsoft Internet Explorer require the user to run this update.
- ◆ Windows NT users *must* have Service Pack 3 or higher installed on their machine before performing this update.
- ◆ **DO NOT** run this update on Windows 98, ME Windows NT 3.x or Windows 2000.
- ◆ From a client that requires this update:
  - Click on **Start**, and then click on **Run**.
  - In the Open box, type:  
**d:\utility\401comupd.exe** (where d:\ is your CD-ROM drive)



- Click on **OK** or press [Enter]. Follow the onscreen instructions.